

OptiVantage[®]

Multi-use



UNCOMPROMISED EFFICIENCY & PATIENT SAFETY



Guerbet | 

COMMITTED



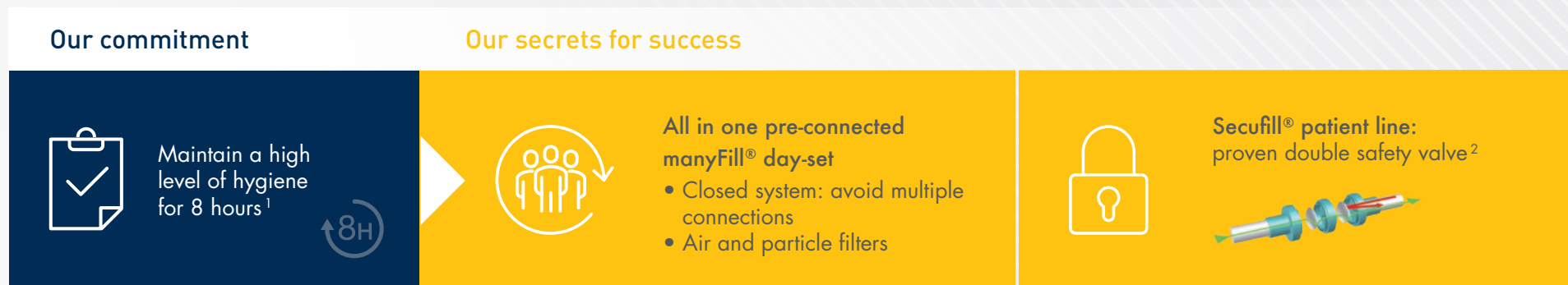
***Contrast media injectors** are widely employed in radiology procedures and have become a necessity for optimal imaging. Today's injectors are easily operated both at the bedside and remotely, and are optimized to adapt to the latest examination protocols. An optimal injector should enable swift and comfortable changes between patients in addition to saving time and money and being user friendly.*

FOR THE PATIENT

SAFETY

OUR MAIN PRIORITY IS TO IMPROVE THE DESIGN OF OUR INJECTORS WHILE OPTIMIZING BOTH HYGIENE AND SAFETY

LOWER RISK OF CONTAMINATION AND INFECTION



LOWER RISK OF EXTRAVASATION AND AIR INJECTION



1. Refer to manyfill instructions for use

2. Vermeulen C, Noury B & Al. - Microbial Safety Assessment of a Double Check-Valve Patient Line in a Multi-use Contrast Delivery System - Radiol Technol. 2015 Nov-Dec;87(2):139-49



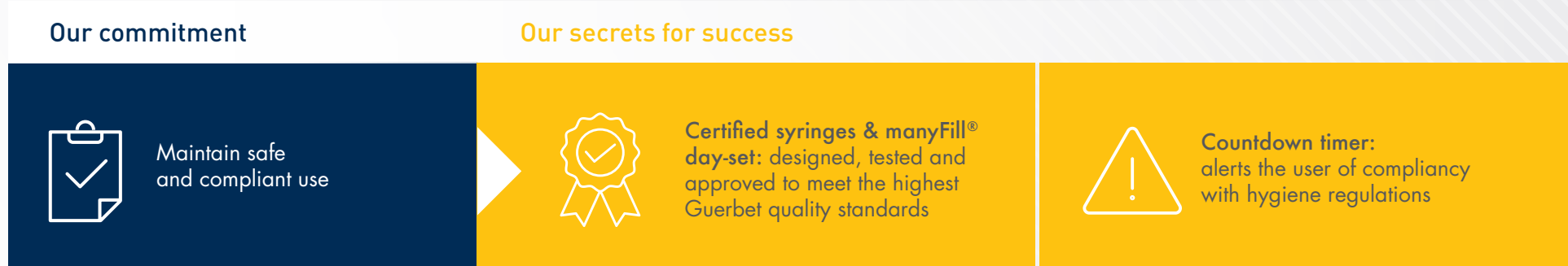
FOR THE USER

SAFETY

OPTIMAL CONTRAST ENHANCEMENT



COMPLIANT PROCESS



3. May be subject to an additional fee. Can differ from country to country. For more information please contact your local Guerbet representative
Navin P, Murray AM & Al. Shapedbolus protocol reduces contrast medium volume in abdominal CT while maintaining image quality Clinical Radiology 2017 Mar;72(3):265.e1265.e5



*Contrast media injectors have been used successfully for decades worldwide. Scans are becoming faster and more complex, they involve more workflows and greater workloads, generating a need for **intuitive and ergonomic devices to improve comfort and performance** for radiologists and their patients.*

EFFICI

OPTIMIZED WORKFLOW: ENSURE A GOOD PATIENT FLOW

Our commitment



Improve handling conditions for a simple and fast workflow

Our secrets for success



Only a few seconds' preparation between patients: unique secufill® patient line



Less time spent positioning and setting up

- Powerhead screen at patient side
- More time with your patients

ENCY

OUR SMART TECHNOLOGIES
ARE DESIGNED TO
IMPROVE PRODUCTIVITY
BY STREAMLINING USER
WORKFLOW IN ORDER TO
SAVE TIME AND FOR
STRESS-FREE USE



EFFICI

IMPROVED WORKLOAD: ENSURE GREATER COMFORT

Our commitment



Simplify processes with automatic operations and a specific design

Our secrets for success



All-in-one pre-connected manyFill[®] day-set: increases safety, simplicity and optimizes workload



Automatic purge: prevent massive air injection with a single press of a button



Automatic filling: fill both sides simultaneously



Color-coding: quickly identify contrast and saline sides as well as connections

ENSURE A BETTER FLEXIBILITY

Our commitment



To be effective for both multiple-patient and single-patient procedures

Our secrets for success



Two different modes

- Increase the number of interventions
- Meet needs during day and night shifts



Complete manyFill[®] day-set range designed, tested and approved to meet the highest Guerbet quality standards

ENCY





*Since contrast media injectors play a critical role in imaging and in your daily practice, we aim to improve traceability and automation with **new integrated digital solutions**.*

*We also want to keep our injectors as efficient as possible. We therefore provide a year-round **dedicated service team** to test performance using specific tools and software, ensure the system is accurate and confirm the equipment is operating per specifications and according to your requirements.*

COMMITTED TO YOUR SOLUTIONS

THESE ARE
OUR PRIORITIES
THEY ARE
OF CRUCIAL
IMPORTANCE!

COMPLETE INJECTION MANAGEMENT SOFTWARE SOLUTION

Our commitment



Offer a contrast media injection management software solution tailored to your needs

Save you administration time while ensuring full and automatic traceability of patient and contrast injection data

Our secrets for success



Unique connectivity with information systems used in radiology⁴

Such as the HIS, RIS, PACS and EMR



Collection, archiving, review, analysis and sharing of injection data

- Including all information relating to injections during medical imaging examinations, which may be combined
- Including data on contrast products, adverse events, injector activity, information on estimated glomerular filtration rate (eGFR) and other risk factors
- Available in 14 languages



Contrast&Care⁵

TOP SERVICES AND SUPPORT SYSTEMS FOR TOP-TIER CLINICIANS

Our commitment



Increase added value thanks to a dedicated team and a full package of services

Our secrets for success



Our inhouse team of **qualified experienced engineers**, ready to respond to your needs



OptiProtect⁶
GUERBET SERVICE + SUPPORT

Useful services throughout the lifetime of your OptiVantage®

- Installation
- Preventive maintenance
- Regular updates
- Quick onsite intervention: maintenance, service, repair
- Replacement unit
- Only guaranteed and original manufacturer spare parts

⁴. Refer to Contrast&Care instructions for use

^{5,6}. May be subject to an additional fee. Can differ from country to country. For more information please contact your local Guerbet representative

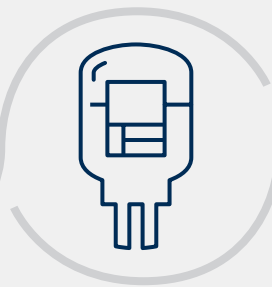
Driven by its commitment to advance radiology today and tomorrow, Guerbet Diagnostic Imaging has designed a portfolio of interconnected contrast imaging solutions to enhance your decision-making at each point of the patient journey from diagnosis, to treatment, to follow-up, so you can focus on what matters most, efficiently improving patient outcomes.

**HIGH QUALITY
CONTRAST MEDIA**



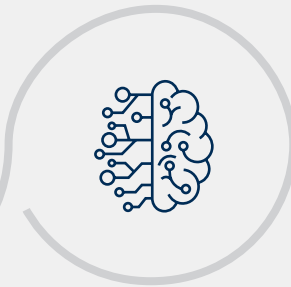
For enhanced clinical
decision-making

**SMART INJECTION
SOLUTIONS**



For safe and efficient
injections

**INNOVATIVE
DIGITAL SOLUTIONS**



For heightened patient
safety and productivity

www.guerbet.com

OptiVantage® injector is a medical device (Class: II b, CE0123) intended for use by medical imaging and diagnostic health professionals, for injecting radiopaque contrast media and saline into a patient's vascular system during CT examinations. OptiBolus® is a bolus shaping software that provides uniform contrast enhancement and extends image acquisition window for dynamic scanning procedures.

OptiVantage® disposables are medical devices (Class: II a, CE0123).

Notified Body: TUV SUD Product Service GmbH. Manufacturer: Liebel-Flarsheim Company LLC, 2111 East Galbraith Road, Cincinnati, OH 45237, USA.

secufill®: single use patient line with double valve for CT & MRI (Class II a medical devices, CE0459).

manyfill®: multi-use filling/injection set for CT (Class II a medical devices, CE0459).

Contrast&Care®: medical device (Class I, CE).

Notified Body: LNE G-Med. Manufacturer: Medex, 240 Allée Jacques Monod, 69800 Saint-Priest, France.

For complete information about precautions and optimal usage conditions for these medical devices, we recommend consulting the instructions notices/user's manuals.

Ensure that injection from multi dose containers and to more than one patient respects the valid rules of good practice and the marketing authorization (MA) of the contrast agent and local regulatory requirements.

The multiple use of manyfill® disposables is intended for multi patients markets. Use a new secufill® patient line for each patient.

OptiVantage®, OptiBolus®, Patency Check®, Timing Bolus®, OptiProtect™, LF™, Contrast&Care®, secufill®, manyfill® are trademarks of Guerbet.

Patents pending and issued patents. © Copyright 2019 Guerbet - All rights reserved. Document creation date: January 2019.

P18 128 OPV.